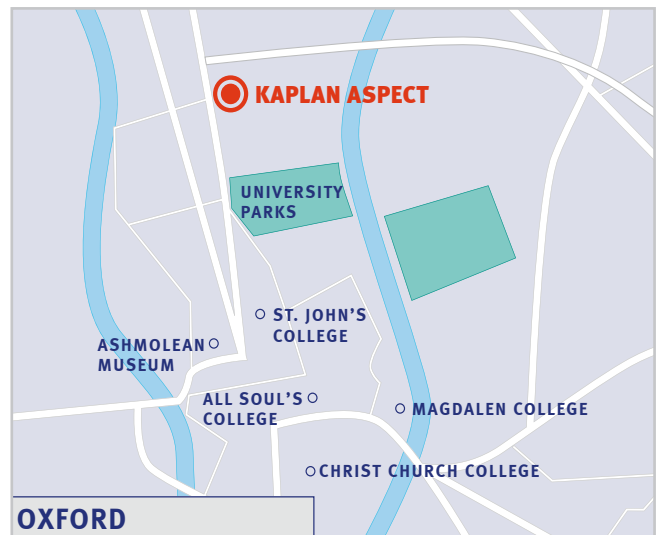


## Student Apartments Oxford

# St. Clements Apartments

Kaplan Aspect Oxford is happy to introduce our new apartment style accommodation option to students aged 18 and over. The accommodation comprises 23 single rooms, well-equipped kitchens, living areas, and bathrooms. The rooms each have a single bed and desk, and the kitchens have a TV and DVD player too!

It is a short walk away from local shops, restaurants and the town centre, and directly opposite a big park. Cowley Road, with local sports centres, pubs, supermarkets and night clubs, is located a 2-minute walk from the apartments. The accommodation is also a 20-minute bus ride from the school on an excellent bus service. The accommodation is maintained and organised by an on-site warden.



St. Clements Apartments  
2 Glebe Street  
Oxford  
OX4 1DQ  
United Kingdom



One of the St. Clements



Single room



Bathroom



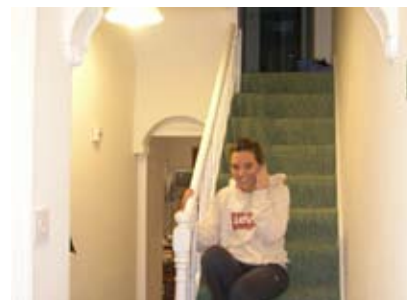
Kitchen



Shower



Study desk



Stairs

## Accommodation details

### Type of accommodation

The apartments compose 23 single rooms. There are shared living rooms, kitchens and bathrooms.

### Meals

Self-catering. The apartments have a kitchen where students can prepare their own meals.

### Kitchen

The kitchens have an oven, a microwave and a refrigerator, as well as all cooking utensils. Students provide all washing and cooking materials.

### Rooms

Each bedroom consists of a bed, study desk and storage space.

### Bathrooms

There are shared bathrooms in the apartments, one with a bath and WC and one with a shower and WC.

### Utilities

Electricity, gas and water are included in the accommodation fee. Electric current is 240 volts AC, so some students will require an adaptor.

### Internet and phone

There is no telephone access in the apartments. Students can use local public phones, there is a payphone outside the apartments. There is wireless internet access in all apartments.

### Laundry

Students are responsible for their own laundry, including bed linen. A washing machine is available for students' use.

### Security and keys

Students are issued with keys on arrival, rooms are lockable.

### Cleaning

Students are responsible for all the cleaning.

### Linens and towels

One set of bed linen will be provided on arrival. Towels are not provided.

### Deposit

A refundable housing deposit of GBP 100 may be charged on arrival.

### Visitors

No unaccompanied visitors are allowed into the house. Visitors are to leave by 11pm. No visitors are permitted to stay overnight.

### Noise and restrictions

Students are requested to be considerate of their neighbours and keep noise to a minimum after 11pm.

### Availability

The apartments are available year-round. Please check availability.